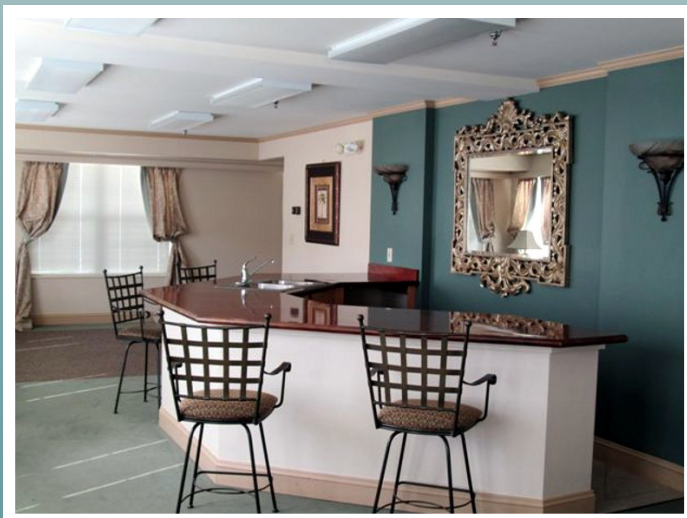


Harbour Towne

Senior Apartment Complex located in Lewes, Delaware



(302) 645-1003



Harbour Towne

34232 Woods Edge Drive

Lewes, DE 19958

(302) 645-1003 Phone

(302) 645-1004 Fax

Proudly Managed by East Coast Property Management

Apartment Features

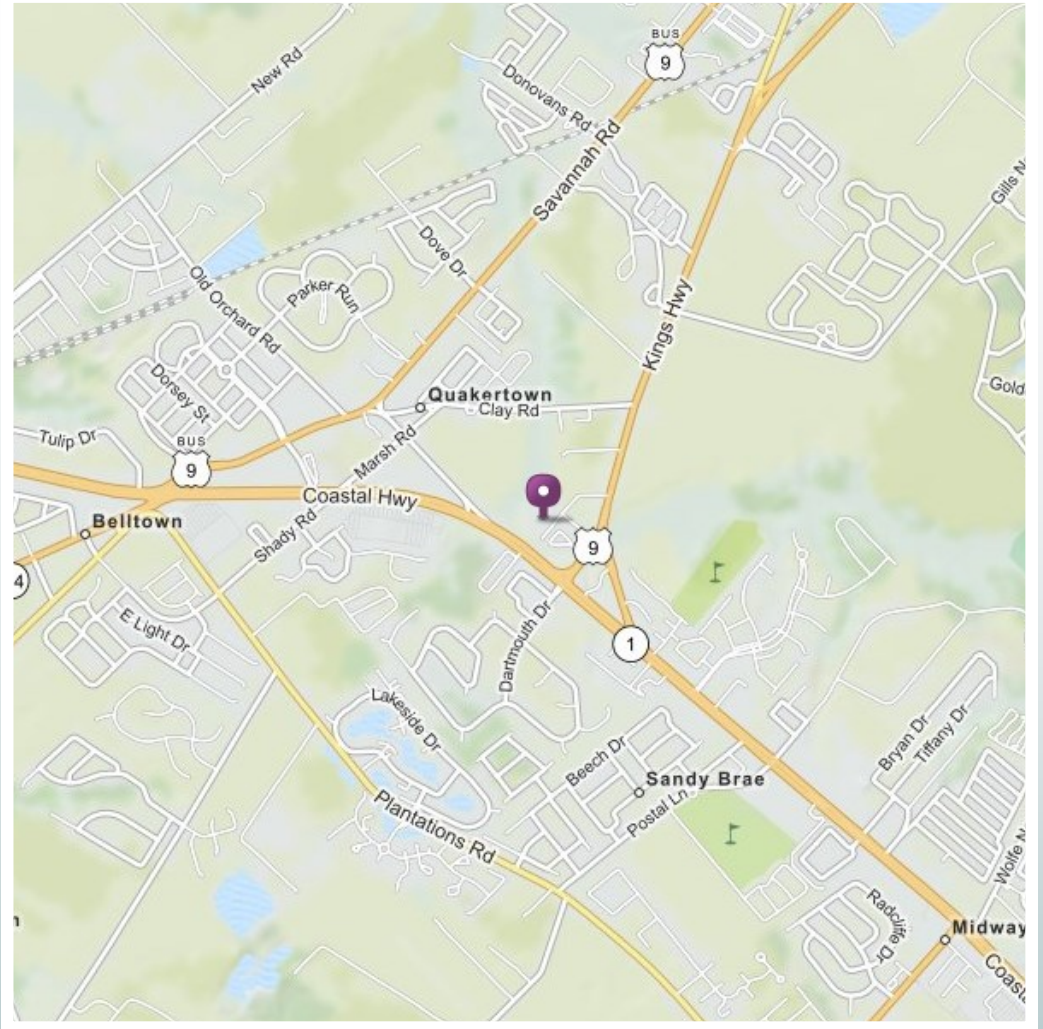
- Private Entrances
- Central Air
- Spacious Living Area
- Fully Equipped Kitchen
- Smoke Detectors
- Mini Blinds
- Elevator

Community Features

- On-Site Management
- Private Off Street Parking
- 24 Hour Maintenance Emergency
- Private Entrance
- On-Site Laundry Facility
- Meeting Rooms
- Sunroom

Offering

2 Bedroom Apartments
Income Restrictions Apply



Harbour Towne is located in Lewes and is a city situated along the Breakwater harbor which is incorporated on the Delaware Bay. Lewes is a rapidly growing Cape Region. Second Street is considered the town's main street. They have a wide variety of shops, restaurants, and historical venues. Fisherman's Wharf also offers multiple restaurants and bait shops for in season fishing.

The city of Lewes offers a wide variety of activities for its residence. They offer the Zwaanendael Museum and several iconic Lighthouses. Lewes also offers many parks and even their own beach, Lewes Beach.

They city of Lewes belongs to the Cape Henlopen School district and includes Lewes Middle, Shields Elementary and Cape Henlopen high.

